

50m0





1962/2012

50mo è la collezione pensata e dedicata ai 50 anni di Ceramica Faetano. Due i formati inediti 21,5 x21,5 e 10,7x10,7 che accostati in modo diverso creano pareti dalle suggestioni pressoché infinite.

50mo is the specially designed line dedicated to the 50th anniversary of Ceramica Faetano. Two brand new sizes, 21.5x21.5 and 10.7x10.7, can be artfully arranged together to create practically endless captivating wall patterns.

CO
BI
CO
LO







4 i colori realizzati
con il metodo della smaltatura
della pietra lavica
per ottenere un effetto profondo,
luminoso e brillante: blu, verde
smeraldo, rosso, bianco.
I colori si fondono con la base
evidenziandone maggiormente
il cosiddetto effetto craquelé.

*There are 4 colors made using
the lava stone glazing method
to achieve a deep, brilliant
and luminous effect: blue,
emerald green, red and white.
The colors bond to the base,
further evidencing the so-called
craquelure effect.*





MO 5 - Mosaico / MO 5 - MO 18
Batik Seta - Batik Seta S

Un risultato di grande fascino
si ha ancora di più
con l'abbinamento ai batik,
i decori floreali ottenuti
con la massima espressione
della tecnologia digitale.

*The result is even more fascinating
when combined with batik designs,
the floral decors achieved
through the highest expression
of digital technology.*



MO 18 - Mosaico Batik Noce



MO 18 / Bianco
21,5x21,5 - 8 1/2"x8 1/2"

□056

AEP / MO 18
□040



Eventi Bianco S / MO 18
3x21,5 - 1 1/8"x8 1/2"

□019



MO 4 / Verde
21,5x21,5 - 8 1/2"x8 1/2"

□068

AEP / MO 4
□040



Eventi Verde S / MO 4
3x21,5 - 1 1/8"x8 1/2"

□019



MO 5 / Blu
21,5x21,5 - 8 1/2"x8 1/2"

□068

AEP / MO 5
□040



Eventi Blu S / MO 5
3x21,5 - 1 1/8"x8 1/2"

□019



MO 6 / Rosso
21,5x21,5 - 8 1/2"x8 1/2"

□068

AEP / MO 6
□040



Eventi Rosso S / MO 6
3x21,5 - 1 1/8"x8 1/2"

□019



Batik Noce
21,5x21,5 - 8 1/2"x8 1/2"

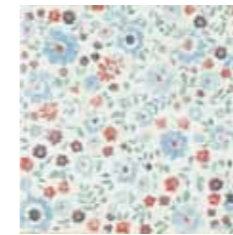
□083

AEP / Batik Noce
□040



Batik Noce S
3x21,5 - 1 1/8"x8 1/2"

□019



Batik Seta
21,5x21,5 - 8 1/2"x8 1/2"

□083

AEP / Batik Seta
□040



Batik Seta S
3x21,5 - 1 1/8"x8 1/2"

□019



Batik Glicine
21,5x21,5 - 8 1/2"x8 1/2"

□083

AEP / Batik Glicine
□040



Batik Glicine S
3x21,5 - 1 1/8"x8 1/2"

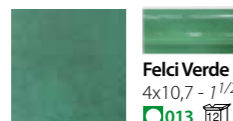
□019



Mosaico / MO 4
21,5x21,5 - 8 1/2"x8 1/2"

□276

AEG / MO 4
□042



MO 4 / Verde
10,7x10,7 - 4 2/8"x4 2/8"

□072

Felci Verde S / MO 4
4x10,7 - 1 1/2"x4 2/8"

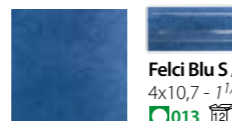
□013



Mosaico / MO 5
21,5x21,5 - 8 1/2"x8 1/2"

□276

AEG / MO 5
□042



MO 5 / Blu
10,7x10,7 - 4 2/8"x4 2/8"

□072

Felci Blu S / MO 5
4x10,7 - 1 1/2"x4 2/8"

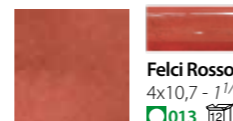
□013



Mosaico / MO 6
21,5x21,5 - 8 1/2"x8 1/2"

□276

AEG / MO 6
□042



MO 6 / Rosso
10,7x10,7 - 4 2/8"x4 2/8"

□072

Felci Rosso S / MO 6
4x10,7 - 1 1/2"x4 2/8"

□013



MO 18 / Bianco
10,7x10,7 - 4 2/8"x4 2/8"

□060



Felci Bianco S / MO 18
4x10,7 - 1 1/2"x4 2/8"

□013



AEG / MO 18
□042



Felci Verde A / MO 4
10,7x10,7 - 4 2/8"x4 2/8"

□013

• soggetti assortiti • Motive sortiert
• different designs • sujets assortis



Felci Blu A / MO 5
10,7x10,7 - 4 2/8"x4 2/8"

□013

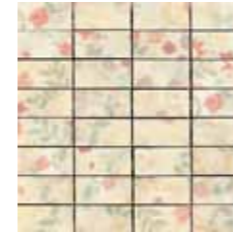
• soggetti assortiti • Motive sortiert
• different designs • sujets assortis



Felci Rosso A / MO 6
10,7x10,7 - 4 2/8"x4 2/8"

□013

• soggetti assortiti • Motive sortiert
• different designs • sujets assortis



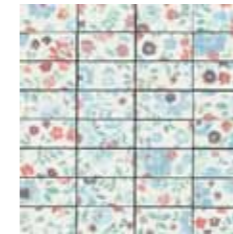
Mosaico Batik Noce
21,5x21,5 - 8 1/2"x8 1/2"

□256



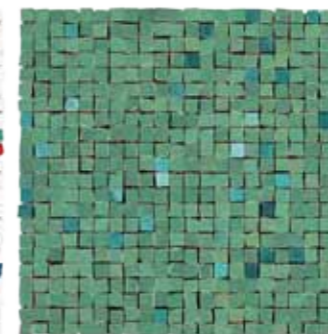
Riflessi Bianco
30x30 - 12"x12"

□086



Mosaico Batik Seta
21,5x21,5 - 8 1/2"x8 1/2"

□256



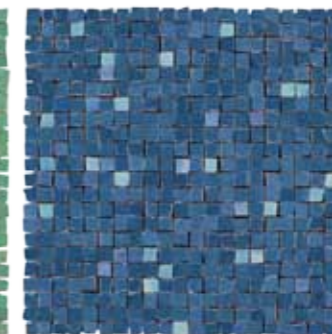
Riflessi Verde
30x30 - 12"x12"

□086



Mosaico Batik Glicine
21,5x21,5 - 8 1/2"x8 1/2"

□256



Riflessi Blu
30x30 - 12"x12"

□086



Riflessi Rosso
30x30 - 12"x12"

□086

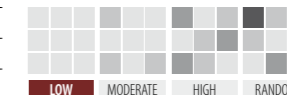


Package	21,5x21,5	10,7x10,7
Pieces	27	78
Mq.	1,25	0,89
Kg.	19,85	14,13



Package	21,5x21,5	10,7x10,7
Boxes	60	60
Mq.	75,00	53,40
Kg.	1200,00	868,00

SHADE VARIATION



LOW MODERATE HIGH RANDOM



SPessore
THICKNESS
STÄRKE
ÉPAISSEUR
10 mm

Price codes:

□ Mq. ■ Ml. □ Pieces

FIRE

Fire, prodotti ceramici per rivestimenti
Fire, ceramic wall tiles
Fire, Keramische Wandfliesen
Fire, produits céramiques pour revêtement

WALL

Wall, idee per il rivestimento
Wall, the wall image
Wall, Ideen für Wandverkleidung
Wall, des idées de revêtement



faetano

Ceramica Faetano S.p.a.
Strada del Marano, 24 - 47896 Faetano - Repubblica di San Marino
Tel. (+378) 0549 996037 - Fax (+378) 0549 996038
www.delconca.com - info@delconca.com